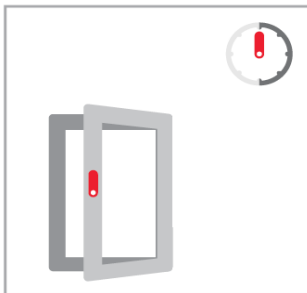


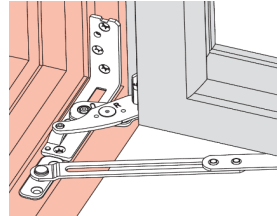


Gjelder for:  
OG, OD, ZD, OS, O2, ZB, ZG, ZF, ZS, Z2, OF, OB

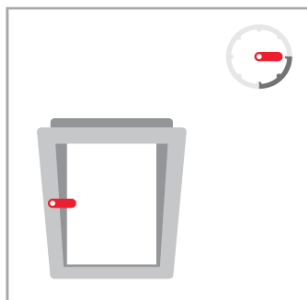
1. Bring the handle into the turn mode and open sash (disconnect turn restrictor, if mounted).



Turn restrictor  
(Pull up to release)



2. Bring the handle into tilt position (press down the lifting mishandling device if mounted).

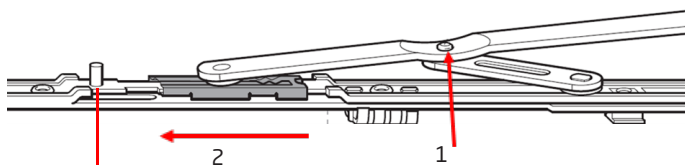


Lifting mishandling device



3. Unhinge the sash stay and secure the sash from falling out.

**Frame width 684 - 1483 mm**

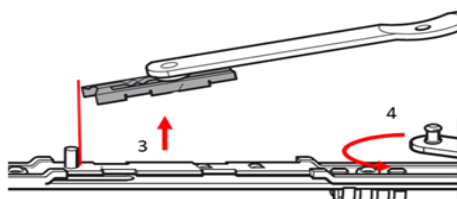


1. Disconnect the hitching pin (pull apart)

2. Move slider to the stop pin by lifting the sash

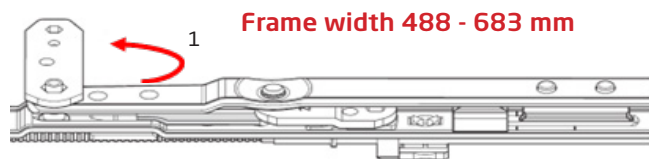
3. Lift up stay arm from stay guide

4. Move hitching pin arm back in closed position.

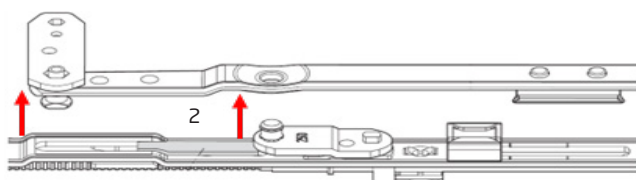




Gjelder for:  
0G, 0D, ZD, 0S, 02, ZB, ZG, ZF, ZS, Z2, 0F, 0B

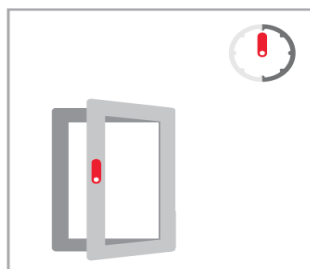


1. Open retainer-clasp

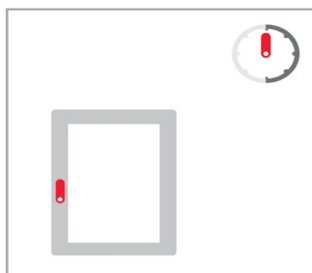


2. Lift up stay arm from stay guide

4. Bring the handle into the turn mode (press down the lifting mishandling device if mounted).



5. Turn the sash closed.



6. Lift the sash slightly tilted out of the pivot rest.

