

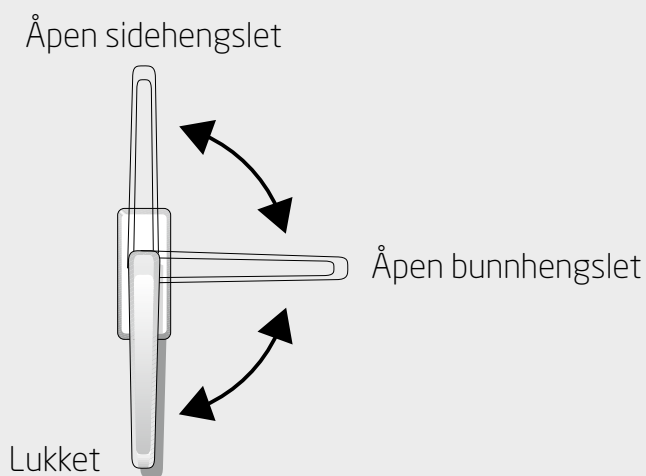
Gjelder for produktkoder:
1H, 2H, 3H, C2, LA, LB, LD, LF, LG, LJ, LK, LM, LN, LS, LU, LV, LW



Brukerveiledning

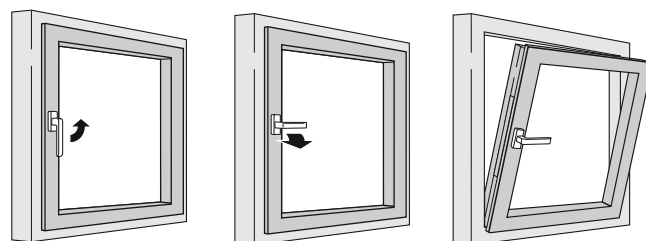
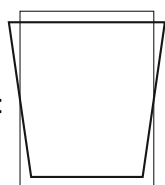
Toveissvingende Vindu	Side 2
Bunnhengslet Vindu	Side 3
Foldedør	Side 4
Skyvedør	Side 5
Skyvedør med luftstilling	Side 6
Ytterdør	Side 7

Gjelder for produktkoder:
1H, 2H, 3H, C2, LA, LB, LD, LF, LG, LJ, LK, LM, LN, LS, LU, LV, LW

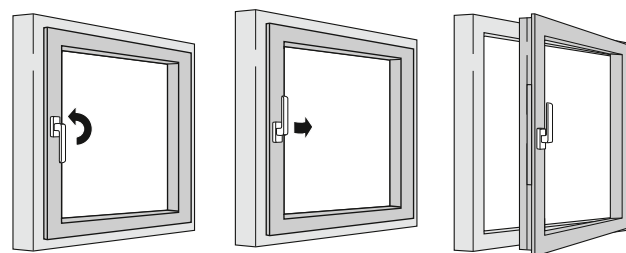
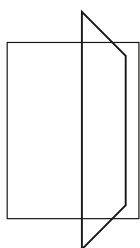


Betjening av toveissvingende vinduer som åpnes innover

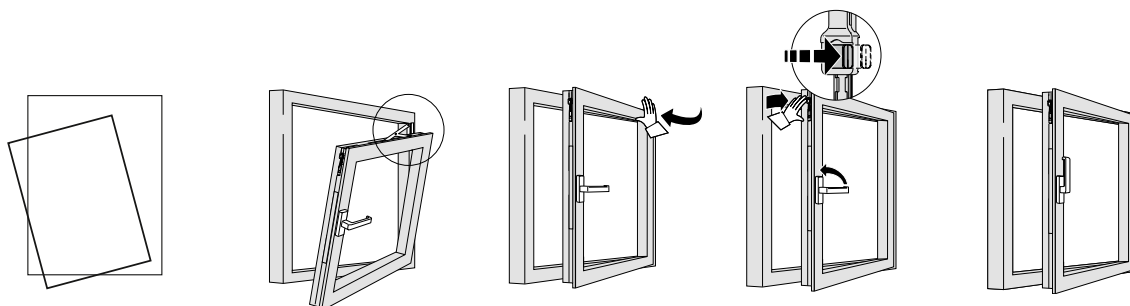
Åpen bunnhengslet



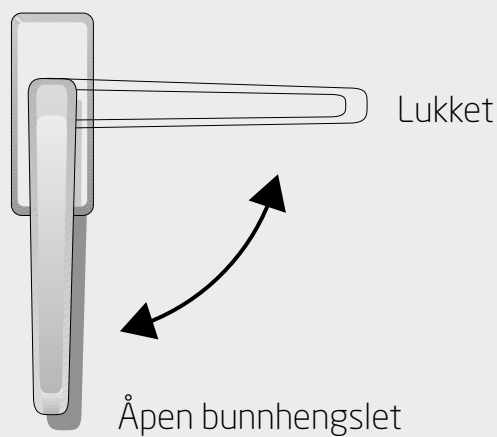
Åpen sidehengslet



Fest rammen
tilbake i
karmen

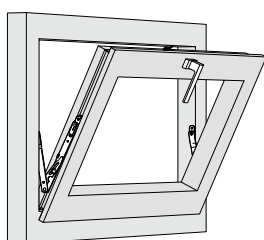
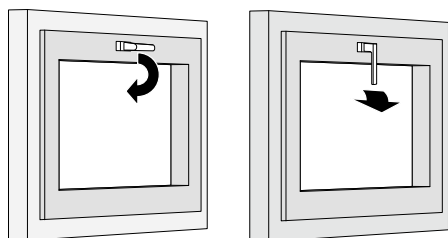
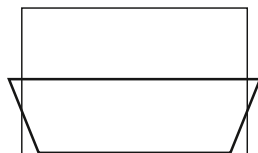


Gjelder for produktkoder:
1H, 2H, 3H, C2, LA, LB, LD, LF, LG, LJ, LK, LM, LN, LS, LU, LV, LW

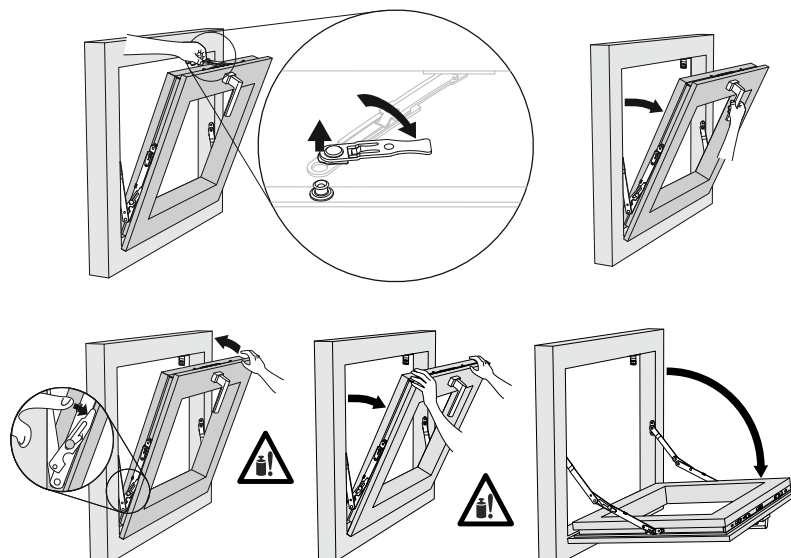
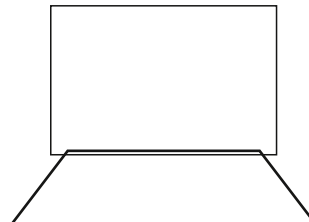


Betjening av bunnhengslet vinduer som åpnes innover

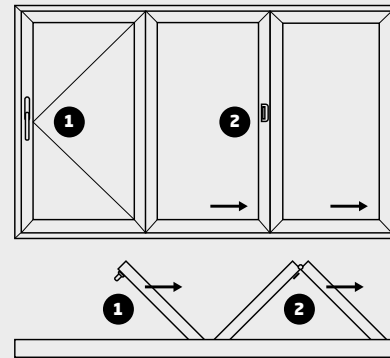
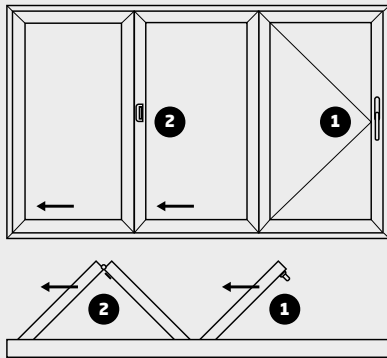
Åpen bunnhengslet



Åpne for rengjøring



Gjelder for produktkoder:
 1H, 2H, 3H, C2, LA, LB, LD, LF, LG, LJ, LK, LM, LN, LS, LU, LV, LW



ÅPNE

Følg disse trinnene for å åpne foldedører:

1. Åpne alltid hoveddørbladet først med håndtak Nr. 1
2. Lås opp foldebladets håndtak Nr. 2 for å folde alle rammene til siden:
 - a) Trekk ut den vertikale delen i midten.
 - b) Drei det 180 grader og skyv det på plass
 - c) Skyv alle rammene til siden.

LUKKE

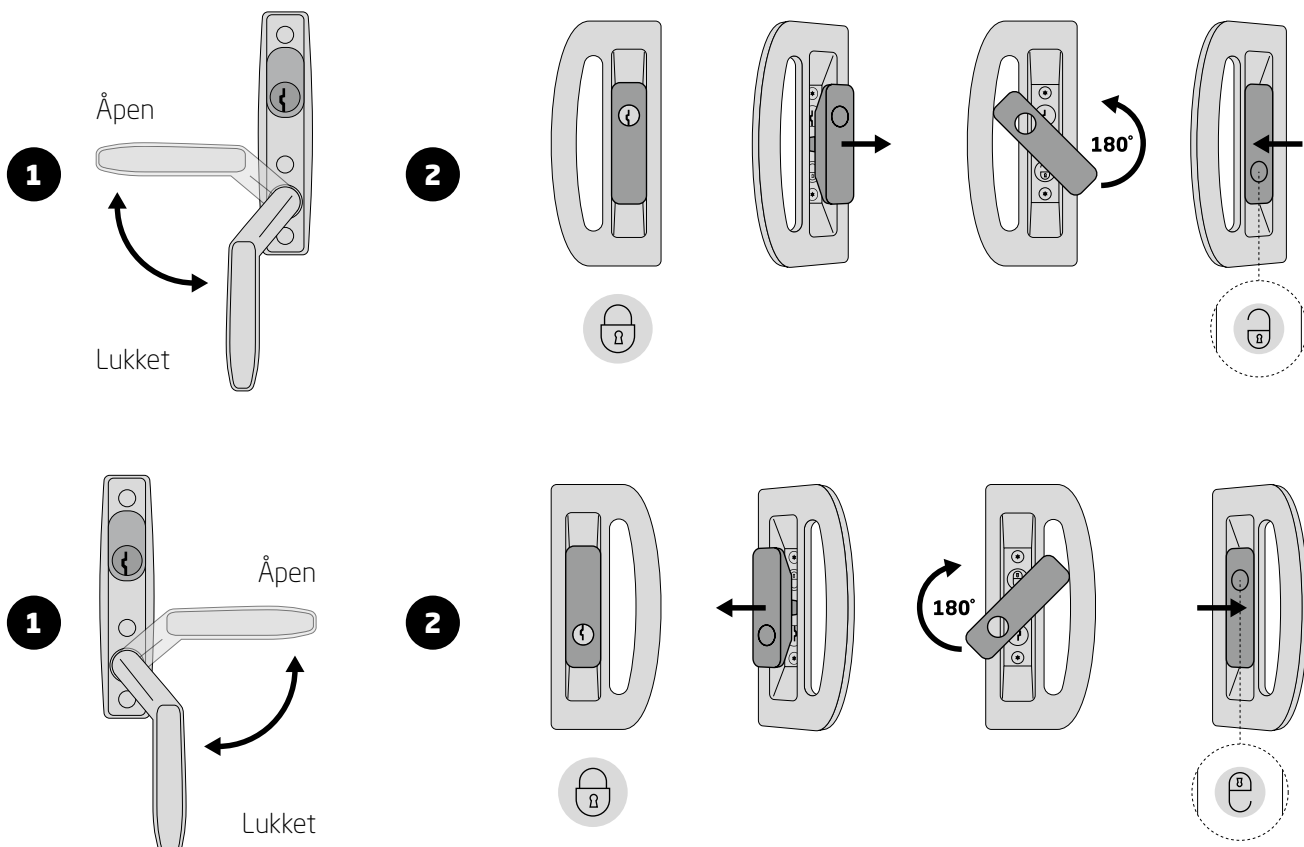
For å låse foldedører gjør det det samme i motsatt rekkefølge:

1. Lås foldebladene først:
 - a) Skyv alle dørbladene bakover.
 - b) Lås/lukk foldeblad håndtak Nr. 2

NB! Lukk alltid folderammen helt før du vrir om håndtaket.

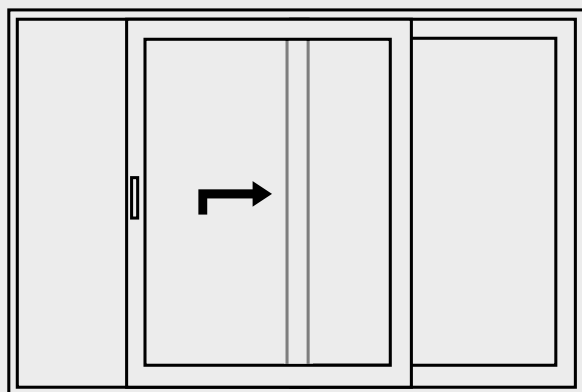
2. Lukk hoveddørblad håndtak Nr. 1

Betjening av foldedører

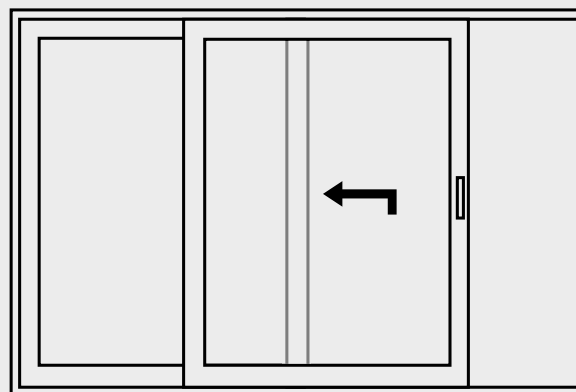


Gjelder for produktkoder:
1H, 2H, 3H, C2, LA, LB, LD, LF, LG, LJ, LK, LM, LN, LS, LU, LV, LW

Venstre betjening

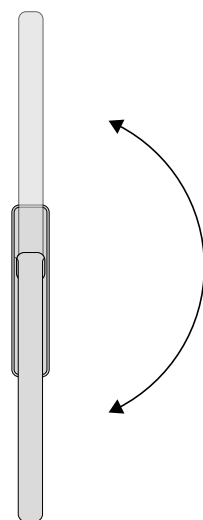


Høyre betjening



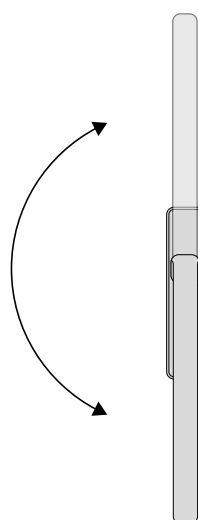
Betjening av Skyvedører

Lukk/stopp



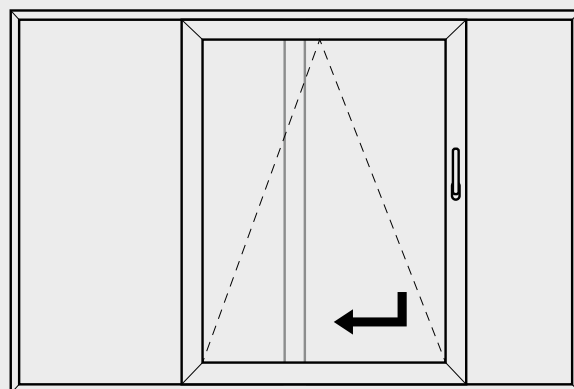
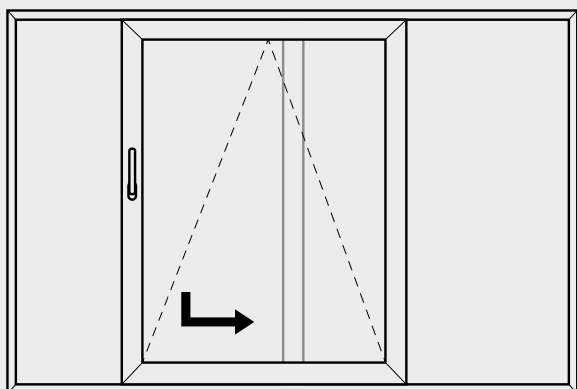
Åpne

Lukk/stopp

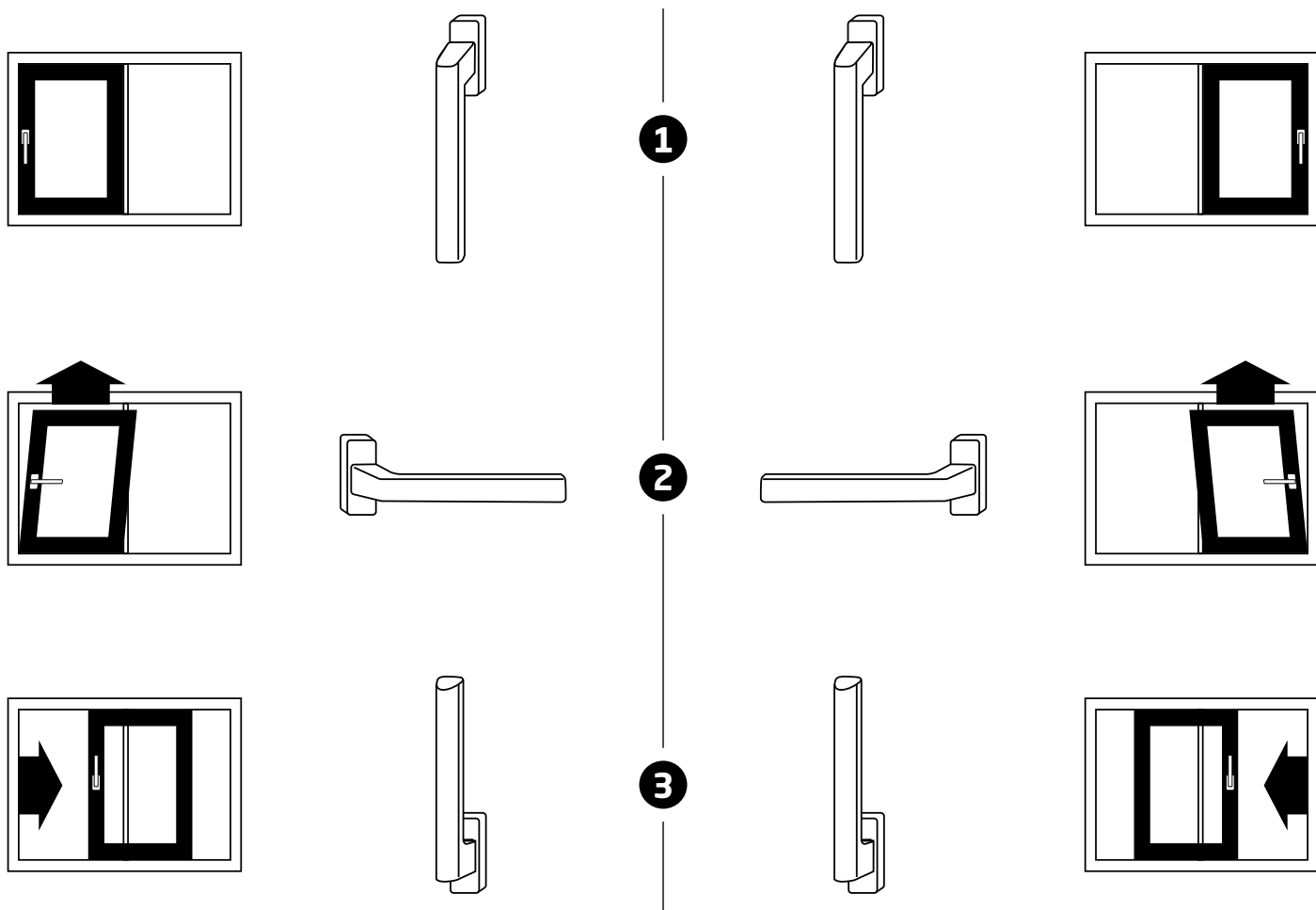


Åpne

Gjelder for produktkoder:
1H, 2H, 3H, C2, LA, LB, LD, LF, LG, LJ, LK, LM, LN, LS, LU, LV, LW

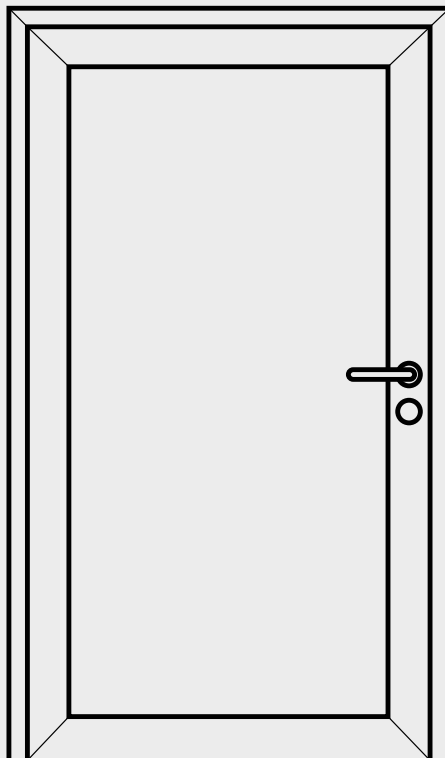


Betjening av skyvedører



Gjelder for produktkoder:

1H, 2H, 3H, C2, LA, LB, LD, LF, LG, LJ, LK, LM, LN, LS, LU, LV, LW



Betjening av ytterdører med standardvrider

